



### BID SPECIFICATIONS

**S  
T  
A  
N  
D  
A  
R  
D**

- \* MATCHES 24H DISPLAY LINE AND COUNTERS
- \* ALL TEMPERED, DOUBLE PANE GLASS ON FRONT AND SIDES
- \* LED LIGHTING
- \* TOP GLASS LIFTS UP (HYDRAULIC)
- \* GALVANIZED STEEL CHASSIS CONSTRUCTION
- \* INSULATED WITH DENSE NON-CFC ECOLOGIC POLYURETHANE FOAM
- \* INSIDE STRUCTURE MADE OF HIGH GLOSS 304 STAINLESS STEEL
- \* STAINLESS STEEL WORK SURFACE
- \* DIGITAL DIAGNOSTIC CONTROL SYSTEM WITH PROGRAMMABLE DEFROSTING
- \* REFRIGERATED DECK, NON-REFRIGERATED SHELVES
- \* REAR PLEXIGLASS SLIDING DOORS
- \* SELF-CONTAINED, AIR-COOLED CONDENSING UNIT
- \* MULTIPLEXING CAPABILITY WITH GELATO, PASTRY, DELI, AND CHOCOLATE CASE APPLICATIONS
- \* THE STANDARD LIMITED WARRANTY INCLUDES:  
5 YEAR COMPRESSOR: 1 YEAR PARTS; 90 DAYS LABOR
- \* FRONT AND SIDE PANELS OPTIONAL

**O  
P  
T  
I  
O  
N  
A  
L**

- \* FULLY REFRIGERATED SHOWCASE OPTION
- \* CASTERS
- \* GRANITE WORK SURFACE (OPERATOR SIDE)
- \* REMOTE CONDENSING UNIT
- \* FACTORY STANDARD MATTE WHITE FRONT AND SIDE PANELS



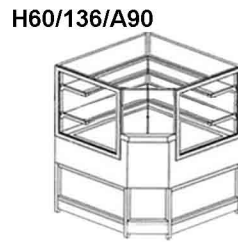
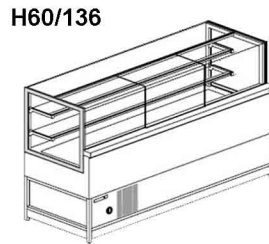
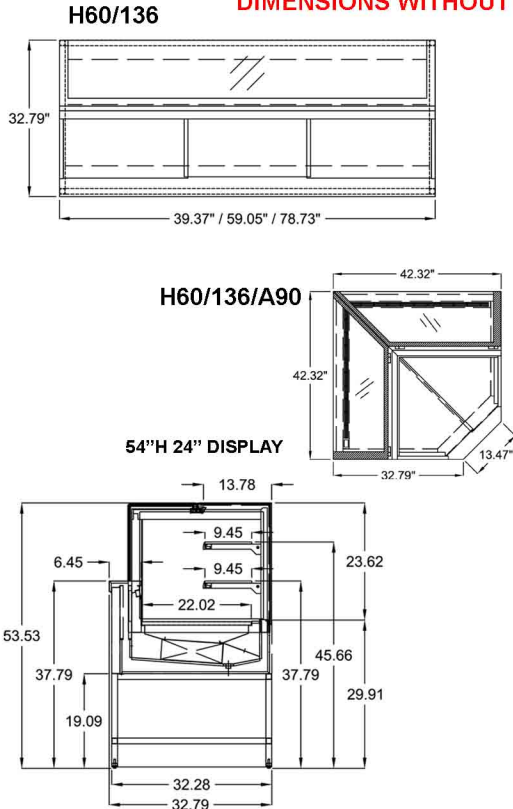
## 24h La Rossa Deli H60 24" Display Technical Specifications

Same as Pastry Cases, no drawer

Model no.	Case Height	Case Lengths (Option #1)	Case Depth (Option #1)	Case Lengths (Option #2)	Case Depth (Option #2)	Crated Weights (lb)	Line Voltage	Amp Draws	Working Temp F	Shelves
C83-RVS H60/136/10	53.53"	39.36"	32.79"	40.86"	36.79"	723	220/1/60	12	38 - 41	2
C83-RVS H60/136/15	53.53"	59.05"	32.79"	60.55"	36.79"	880	220/1/60	14	38 - 41	2
C83-RVS H60/136/20	53.53"	78.73"	32.79"	80.23"	36.79"	1066	220/1/60	14	38 - 41	2
C83-RVS H60/136/A90	53.53"	42.32"	32.79"	47.07"	36.79"	715	220/1/60	14	38 - 41	2

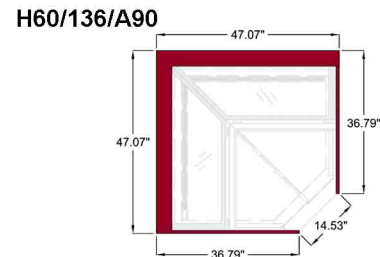
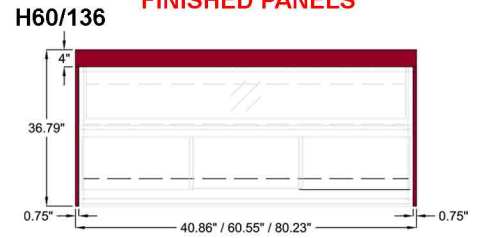
### OPTION #1

#### DIMENSIONS WITHOUT PANELS



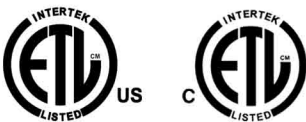
### OPTION #2

#### DIMENSIONS WITH FACTORY FINISHED PANELS



### PLAN VIEWS / SIDE VIEW (SHOWN WITHOUT PANELS) / 3D VIEW (FRONT & REAR)

#### LISTINGS:



#### ELECTRICAL CONNECTION:

Display cases are shipped with applicable junction box for hardwired installation  
Options exist for several NEMA configurations  
Plug and/or receptacle configurations are at the discretion of the electrical installer

#### NOTE:

Required ambient conditions: 75°F; 55% RH  
Drawing and Specifications are subject to change without notice

CLABO USA INC.  
2556 Barrington Court,  
Hayward, CA 94545 USA  
PH 800.672.2784  
FAX 510.441.0401  
<http://www.otl-america.com>